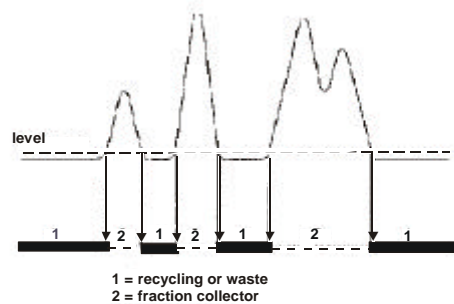


## LABOMATIC LABODIV - 10 Peak Detector

### Application

The LABODIV-10 Peak detector is used for automated fraction collection according to peaks. The non-peak may be drained off so that no test tubes will be wasted for irrelevant buffer solution and solvent collection. Allows solvent recycling (Scheme 2).

The LABODIV-10 is particularly suitable for preparative high performance liquid chromatography (LABOPREP-MPLC, LABOPREP-HPLC).



Scheme 2: Level function

The fraction collector does not operate during draining off of non-peak eluate, but is switched to the next position (fraction) by the LABODIV-10. The advantage is obvious: as soon as a new peak appears, there is also a new test tube ready. Fraction collection according to peaks has now become an easy matter.

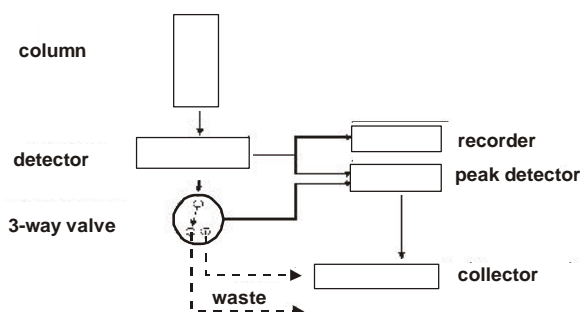
The response time may be delayed if desired so as to avoid fraction change by interference peaks. An automatic voltage reduction prevents any heating of the 3-way PTFE electric valve and hence of the eluate itself.

### Special characteristics

Peak collection and draining off or recycling of irrelevant non-peak eluate by threshold programming. No waste of test tubes. Unaffected by interference peaks through adjustable delay of response time. Operates with any liquid chromatography detector. Extremely easy to use.

### Technical construction

The LABODIV-10 Peak detector is connected in parallel with the analog signal output of the LABOCORD detectors for recording and with the signal input of the LABOCOL fraction collectors (Scheme 1).



Scheme 1: Selection by waste or fraction

### Technical specification

Input sensitivity:	10 mV, 100mV
Adjustment of threshold value:	0-100 % recorder full scale deflection
Liquid opening in 3-way PTFE valve:	2 mm I.D.
Liquid connections:	LABOFIT flanging nut 1/8"
Material of parts in contact with eluent:	PTFE (Teflon), ceramic
Power supply:	110V/220V;50/60 Hz
Dimensions (w x h x d) :	145 x 135 x 70 mm

### Ordering information

Part No.	Product name (Application) (Version)
0.260500.0	LABODIV-10 peak-detector (MPLC)(HPLC)(STANDARD)(BIOCOMPATIBLE) with 3-way PTFE-magnetic valve (2 mm inner diameter)
0.265520.0	3-way PTFE magnetic valve inner diameter 1 mm (24 Volt) connections:1/8" or 1/16"
0.260521.0	3-way PTFE magnetic valve inner diameter 2 mm (24 Volt) connections:1/8" or 1/16"